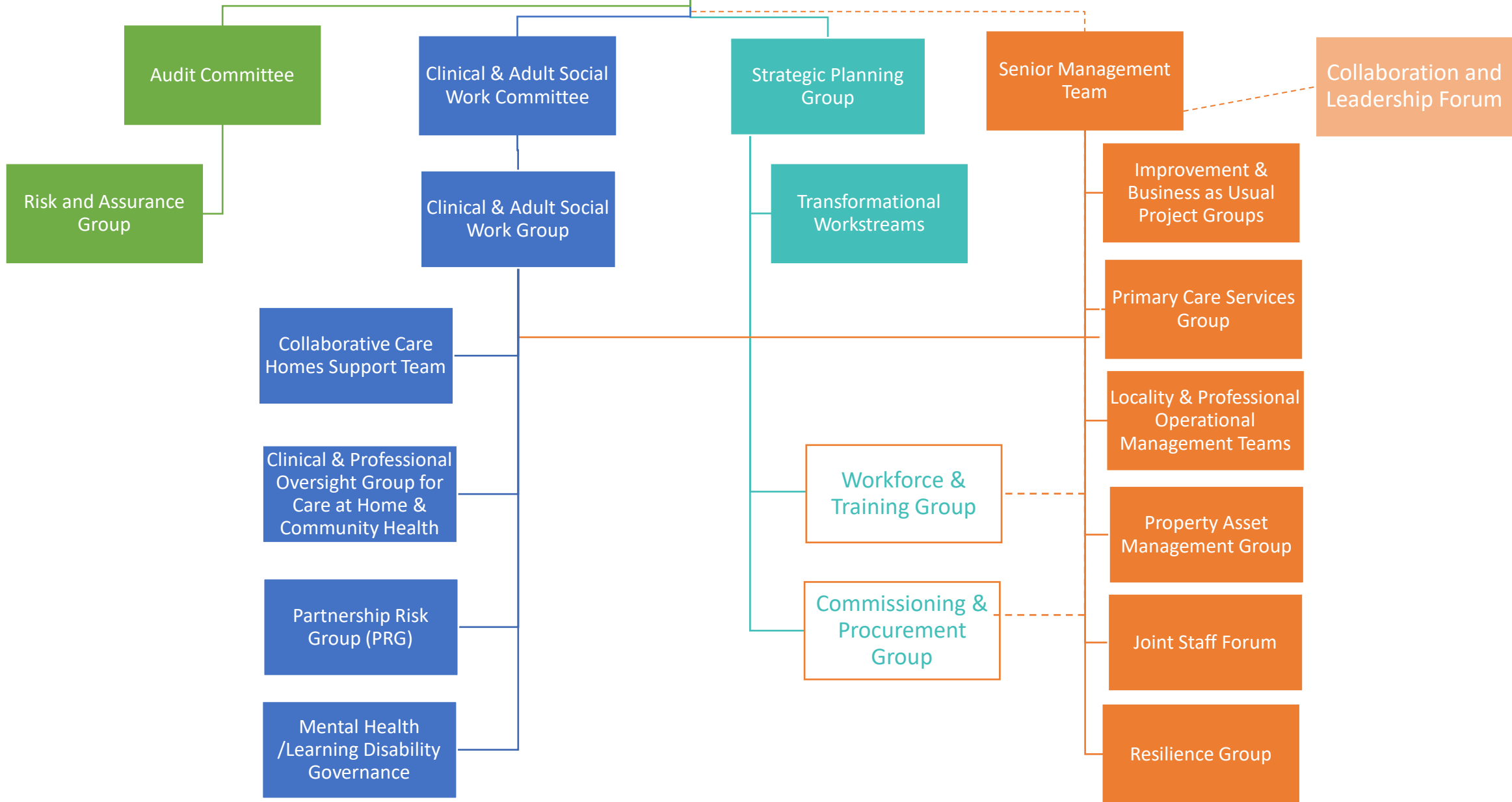


AHSCP Organogram

Slide	Diagram
2	IJB, Committees and Groups
3	Clinical & Adult Social Work Governance Committee – Substructure
4	Strategic Planning Group - Substructure
5	Audit Committee - Substructure
6	Senior Management Team – Operational Structure
7	Operational Team Remit
8	Professional Lead Remit
9	Public Protection Arrangements
10	Strategy & Business Service Remit

IJB



Governance
Clinical & Adult
Social Work

Operational
Working Groups

Links to other Groups
Via lead officers

Clinical & Adult Social Work Governance
Committee

Clinical & Adult Social Work Governance Group

Collaborative Care
Home Support Team

Clinical & Professional
Oversight Group for
Care at Home &
Community Health

Mental Health
/Learning Disability
Governance

Partnership Risk Group
(PRG)

Health &
Safety Group

Infection Prevention
Control Operational
Group

Primary Care
Services Group

- NHS Grampian Clinical Governance Committee
- NHS Grampian Clinical Quality and Safety Group
- Aberdeenshire Council Communities Committee
- Adult Protection Committee
- Child Protection Committee
- Vaccination Transformation Programme Board
- Violence Against Women Partnership
- Risk and Assurance Group
- Corporate Risk Management Steering Group (Council)
- Occupational Health and Safety Subgroup (Council)
- NHS Grampian OHS and Wellbeing Committee
- Cross System Group

Governance Strategy

Operational Working Groups

Links
Via lead officers

Strategic Planning Group

Transformational Projects

Programme Design & Delivery

Service Reviews

Strategy/Plan Design & Development

Commissioning & Procurement Group

Project Groups

Workforce & Training Group

Sub Groups

Strategic Monitoring and Delivery Groups

Partners	Council	NHSG
AVA	Live Life Aberdeenshire	Appointed Rep
RGU	Housing	Union Rep
	Union Rep	

Regional Networks
Engagement Practitioner Network - SLWG
Grampian Engagement Network

Financial & Risk
Governance

Operational
Working Groups

Links
Via lead officers

Audit
Committee

Clinical and Adult Social Work
Governance Group

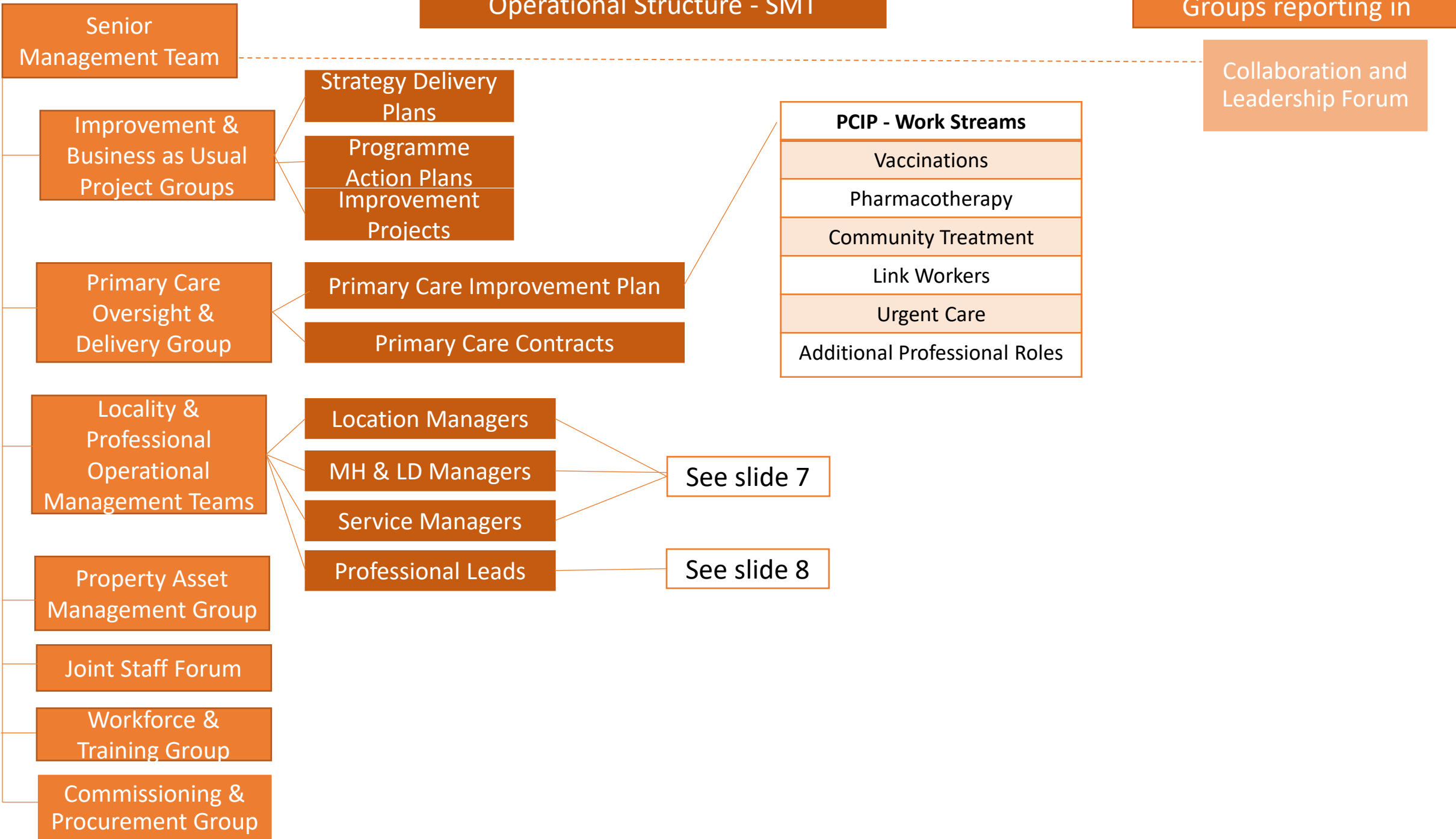


Risk and
Assurance
Group

Governance
SLWG

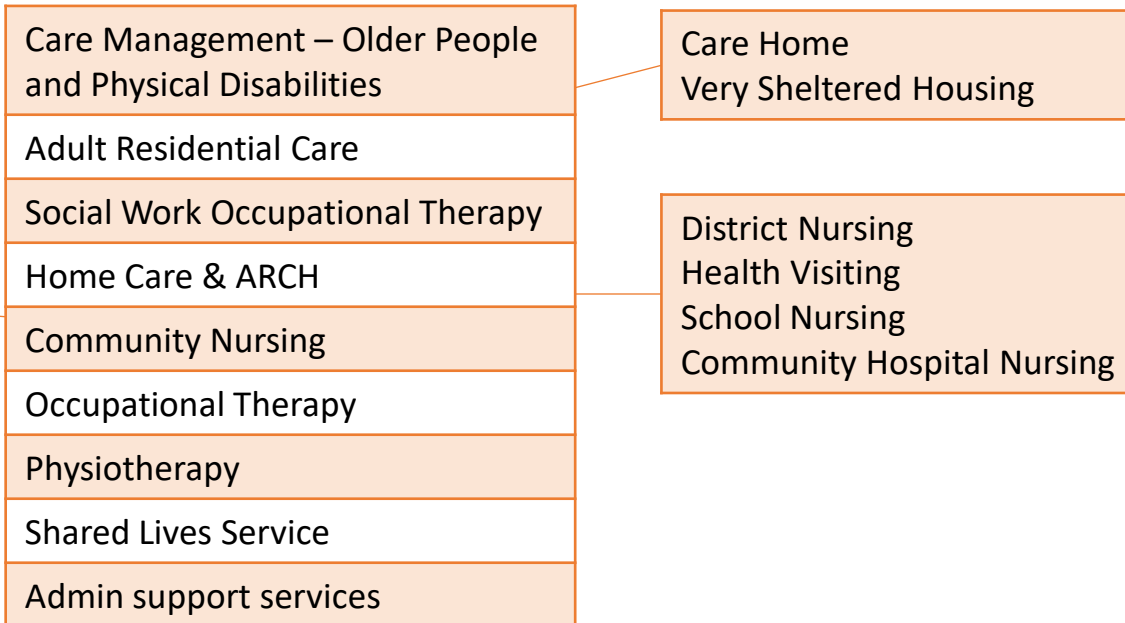
Operational Structure - SMT

Groups reporting in



Operational Team Remit

Location Managers



Hosted Services



MH & LD Managers

MH & LD Community Services	MH & LD Nursing	LD Day Services
Supported Living	LD Residential Care	LD Respite
LD Health Services		

Service Managers

Criminal Justice Social Work
Substance Use Services

Professional Lead Remit

Clinical

General Practice
Pharmacy
Optometry
Dentistry

Primary Care Improvement Plan
Independent Contractor Services
2c Salaried Practices

Nursing

Community Nursing and Out of Hours Nursing	Care Home Nursing
Community Hospital Nursing	Prison & Custody Nursing
Primary Care Nursing	Substance Misuse Nursing
MH & LD Nursing	Children & Families Nursing

School Nursing
Health Visiting
Child Protection Nursing
Infant Feeding Nursing

Allied Health Professionals

Physiotherapy	Speech & Language Therapy
Podiatry	Occupational Therapy
Dietetics	

Social Work

Social Work – Practice Education and Development
Unpaid Carers Support
Self-Directed Support
Adult Support and Protection

Chronic Oedema

Hosted Services

Specialist Nursing Service

Marie Curie Managed Care Service

Bladder & Bowel

Diabetics & Retinal

Heart Failure

Macmillan Nurses

Public Protection Arrangements

Aberdeenshire Council
(Full Council)

Additional Reports to:
IJB = Integration Joint Board
ECS = Education & Children's Services
CC = Community Committee

Executive Group for Public Protection

Reporting
Groups

IJB

ECS

ECS

IJB

CC

CC

CC

Adult
Protection
Committee

Child
Protection
Committee

Violence Against
Women/Girls
Partnership

Alcohol &
Drug
Partnership

Suicide Prevention
Oversight Group
(Grampian)

Prevent

MAPPA Strategic
Oversight Group
(Grampian)

- Operational Practice Group
- Financial Harm Group (Gramp)
- Data sub-group
- Learning & Review Group
- Learning & Development Group (Gramp)

- Operations & Practice
- Data & Self Evaluation
- SCIM & Neglect
- Multi-Agency Learning & Development (CPC & GIRFEC)

- Safe & Together
- Equally Safe at Work
- Equally Safe at School
- Data
- Self Evaluation & Practice Improvement

- Drug Death Review Group
- Lived & Living Experience Subgroup
- Strategic Outcomes Group
- Performance & Reporting Subgroup
- Resource & Governance Subgroup

- North East Suicide Prevention Group**
- Building Community Capacity
- Children & Young People
- Lived Experience & Knowledge
- Suicide Bereavement & Data
- Analysis & Risk

- Radicalisation of Vulnerable Group

Service Remit

